



6 Portia Road Stratford-Upon-Avon, CV37 0AR

This modern well designed unfurnished family home is immaculately presented.

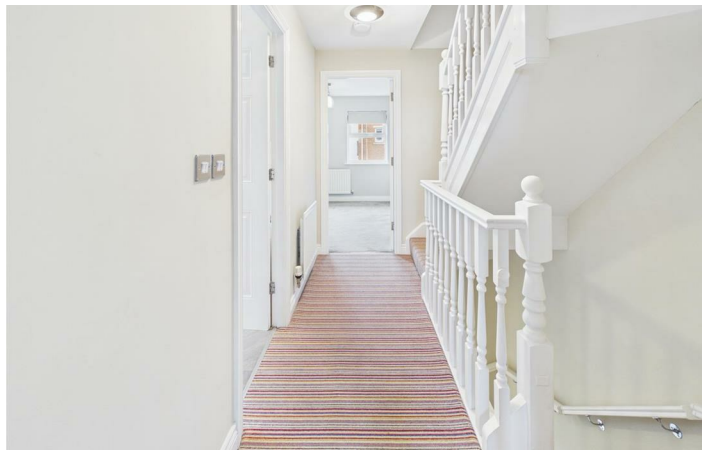
It lies 1 mile from the historic centre of Stratford upon Avon offering residents easy access to upscale retail, dining, and entertainment options.

The cul-de-sac setting ensures minimal traffic and noise, creating a tranquil and safe for families.

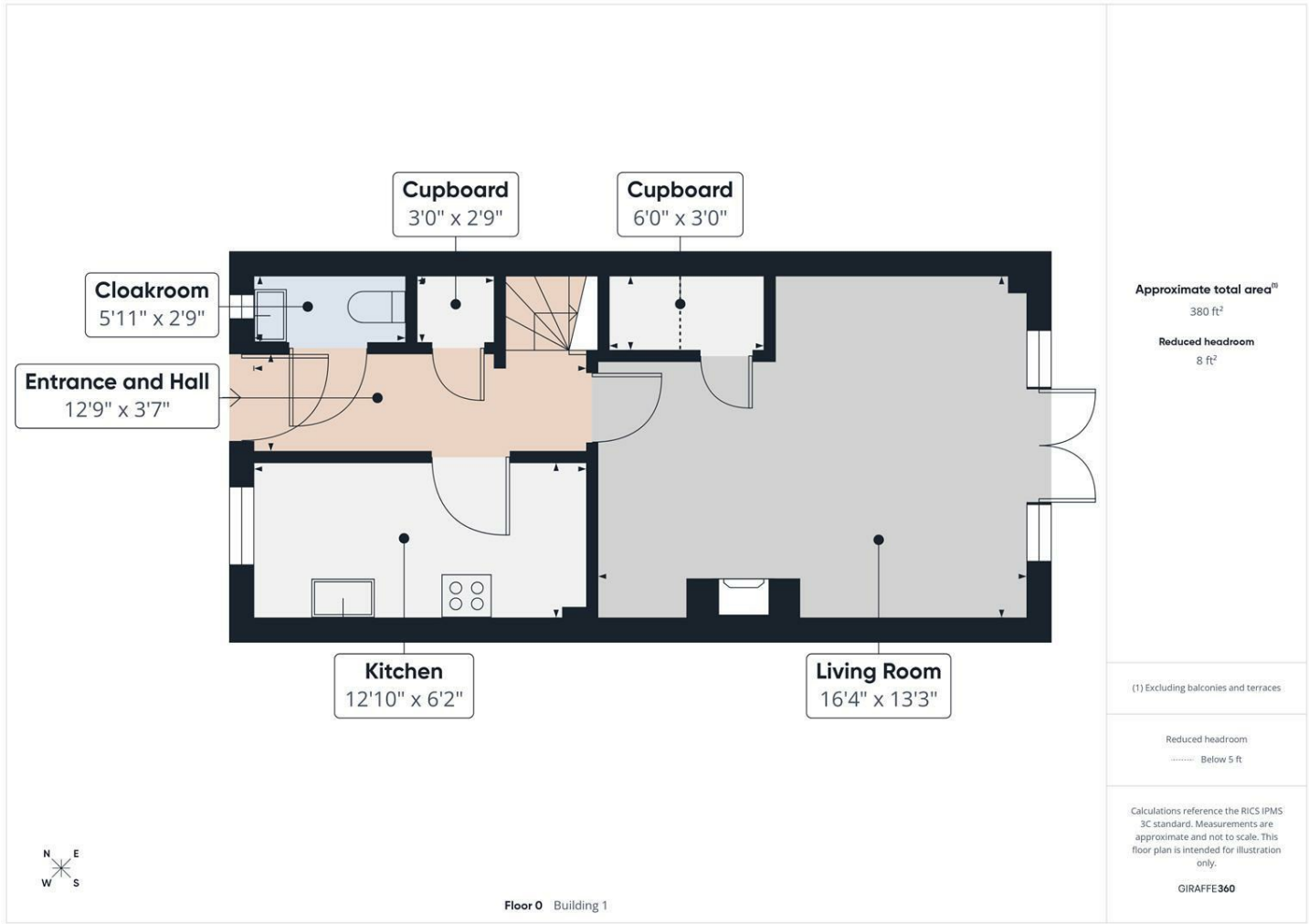
Families will appreciate the proximity of well-regarded schools, eliminating the need for daily drives.

£1,595

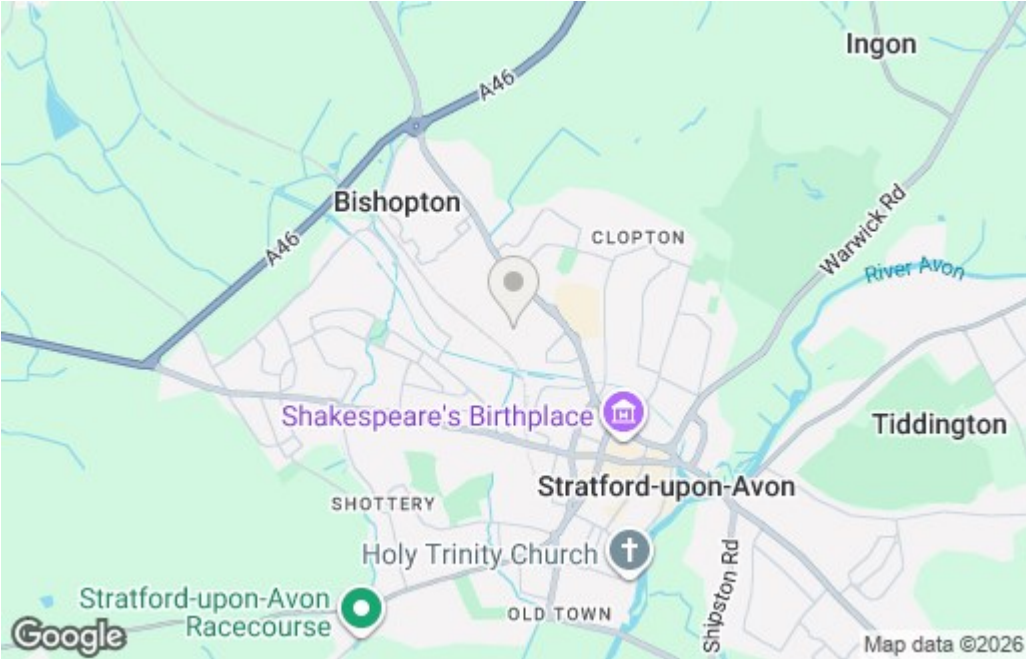




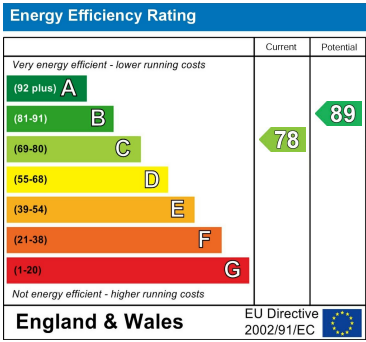
Floor Plan



Area Map



Energy Efficiency Graph



These particulars, whilst believed to be accurate are set out as a general outline only for guidance and do not constitute any part of an offer or contract. Intending purchasers should not rely on them as statements of representation of fact, but must satisfy themselves by inspection or otherwise as to their accuracy. No person in this firms employment has the authority to make or give any representation or warranty in respect of the property.

Zenith House, Highlands Road, Solihull, B90 4PD
Tel: 01217112222 Email: info@solihullresidential.com www.solihullresidential.com